

SOYBEAN BRAND PRODUCT INFORMATION

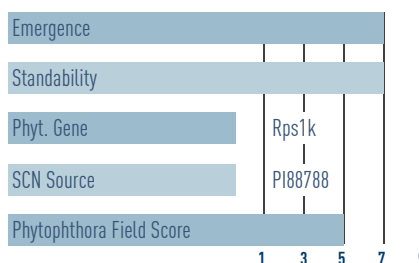


LL3181 N™*

3.1-3.2 Maturity Range
LL,SCN-SB Trait

LIBERTY LINK®

KEY CHARACTERISTICS

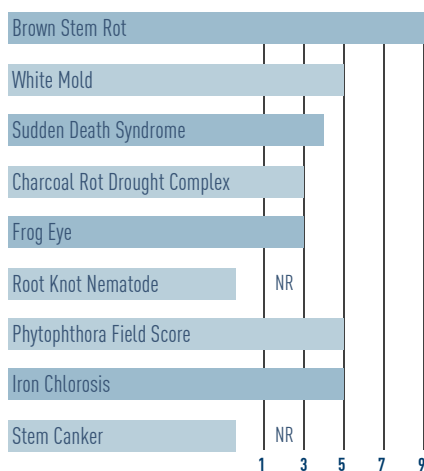


- Elite Liberty Link genetics
- Semi-erect plant type with moderate height
- Very good while mold tolerance
- Highly tolerant to brown stem rot

PLANT CHARACTERISTICS

Plant Height	Plant Type	Pubescence Color	Flower Color	Pod Color	Hilum Color	% Protein	% Oil	Phyto Gene	SCN Source
6	4	Lt Tawny	Purple	Brown	Brown	35	20	Rps1k	PI88788

DISEASE TOLERANCE



MANAGEMENT CHARACTERISTICS

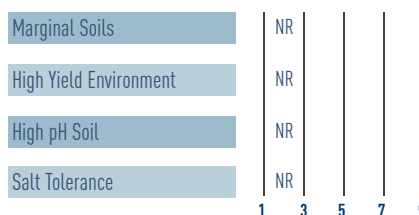


Chart Ratings

All ratings on a 1-9 scale with 9 being the highest | Plant Type: 9 = Extremely Bushy, 1 = Very Narrow | Height Ratings: 4-5 = Medium Height for Maturity, 6-7 = Medium - Tall Height for Maturity, 8-9 = Tall Height for Maturity

1 = Poor, 9 = Excellent | E = Excellent, G = Good, F = Fair | NR = No Rating

R2 = Glyphosate herbicide tolerance

Glyphosate
Tolerant

N = Cyst Nematode resistance

X = Roundup Ready 2 Xtend® soybeans



S = Sulfonylurea herbicide tolerance

DuPont™
STS®
herbicide tolerant gene

Bolt = BOLT® technology



LL = LibertyLink® gene



E = Enlist E3™ soybeans



Always follow stewardship practices in accordance with the Product Use Guide (PUG) or other product-specific stewardship requirements including grain marketing and pesticide label directions. Varieties with BOLT® technology provide excellent plant-back flexibility for soybeans following application of SU (sulfonylurea) herbicides such as DuPont™ LeadOff® or DuPont™ Basis® Blend as a component of a burndown program or for double-crop soybeans following SU herbicides such as DuPont™ Finesse® applied to wheat the previous fall.

Always follow grain marketing, stewardship practices and pesticide label directions. Varieties with the Glyphosate Tolerant trait (including those designated by the letter "R" in the product number) contain genes that confer tolerance to glyphosate herbicides. Glyphosate herbicides will kill crops that are not tolerant to glyphosate.

Always follow grain marketing, stewardship practices and pesticide label directions. Varieties with the Genuity® Roundup Ready 2 Yield® (RR2Y) trait contain genes that confer tolerance to glyphosate, the active ingredient in Roundup® brand agricultural herbicides. Roundup® brand agricultural herbicides will kill crops that are not tolerant to glyphosate. Genuity®, Roundup® and Roundup Ready 2 Yield® are registered trademarks of Monsanto Technology LLC used under license. Individual results may vary, and performance may vary from location to location and from year to year. This result may not be an indicator of results you may obtain as local growing, soil and weather conditions may vary. Growers should evaluate data from multiple locations and years whenever possible. ALWAYS READ AND FOLLOW PESTICIDE LABEL DIRECTIONS. Roundup Ready® crops contain genes that confer tolerance to glyphosate, the active ingredient in Roundup® brand agricultural herbicides. Roundup® brand agricultural herbicides will kill crops that are not tolerant to glyphosate.

Varieties with the DuPont™ STS® gene (STS) are tolerant to certain SU (sulfonylurea) herbicides. This technology allows post-emergent applications of DuPont™ Synchrony® XP and DuPont™ Classic® herbicides without crop injury or stress (see herbicide product labels). NOTE: A soybean variety with a herbicide tolerant trait does not confer tolerance to all herbicides. Spraying herbicides not labeled for a specific soybean variety will result in severe plant injury or plant death. Always read and follow herbicide label directions and precautions for use.

Varieties with the LibertyLink® gene (LL) are resistant to Liberty® herbicide. Liberty®, LibertyLink® and the Water Droplet Design are trademarks of Bayer.

DO NOT APPLY DICAMBA HERBICIDE IN-CROP TO SOYBEANS WITH Roundup Ready 2 Xtend® technology unless you use a dicamba herbicide product that is specifically labeled for that use in the location where you intend to make the application. IT IS A VIOLATION OF FEDERAL AND STATE LAW TO MAKE AN IN-CROP APPLICATION OF ANY DICAMBA HERBICIDE PRODUCT ON SOYBEANS WITH Roundup Ready 2 Xtend® technology, OR ANY OTHER PESTICIDE APPLICATION, UNLESS THE PRODUCT LABELING SPECIFICALLY AUTHORIZES THE USE. Contact the U.S. EPA and your state pesticide regulatory agency with any questions about the approval status of dicamba herbicide products for in-crop use with soybeans with Roundup Ready 2 Xtend® technology. ALWAYS READ AND FOLLOW PESTICIDE LABEL DIRECTIONS. Soybeans with Roundup Ready 2 Xtend® technology contain genes that confer tolerance to glyphosate and dicamba. Glyphosate herbicides will kill crops that are not tolerant to glyphosate. Dicamba will kill crops that are not tolerant to dicamba. Roundup Ready 2 Xtend® is a registered trademark of Monsanto Technology LLC used under license.

Enlist E3™ soybeans were jointly developed by Dow AgroSciences and MS Technologies. Enlist Duo® and Enlist One™ herbicides are not registered for sale or use in all states or counties. Contact your state pesticide regulatory agency to determine if a product is registered for sale or use in your area. Enlist Duo® and Enlist One™ are the only 2,4-D products authorized for use with Enlist crops. Consult Enlist herbicide labels for weed species controlled. Always read and follow label directions.

Corteva™ Agriscience, Agriculture Division of DowDuPont, is a member of Excellence Through Stewardship® (ETS). Products are commercialized in accordance with ETS Product Launch Stewardship Guidance and in compliance with the Pioneer policies regarding stewardship of those products. Crops and materials containing biotech traits may only be exported to or used, processed, or sold in jurisdictions where all necessary regulatory approvals have been granted for those crops and materials. It is a violation of national and international laws to move materials containing biotech traits across borders into jurisdictions where their import is not permitted. Growers should discuss these issues with their purchaser or grain handler to confirm the purchaser or handler's position on products being purchased. For further information on the approval status of biotech traits, please visit www.biotradestatus.com Excellence Through Stewardship® is a registered trademark of Excellence Through Stewardship. Components of LumiGEN™ technologies for soybeans are applied at a Corteva Agriscience™, Agriculture Division of DowDuPont production facility, or by an independent sales representative of Corteva Agriscience or its affiliates. Not all sales representatives offer treatment services, and costs and other charges may vary. See your sales professional for details. Seed applied technologies exclusive to Corteva Agriscience and its affiliates.

