

8091 AM™*

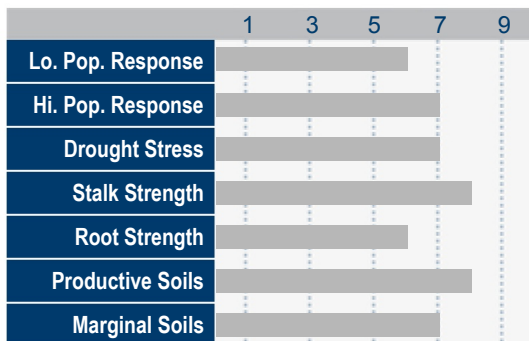
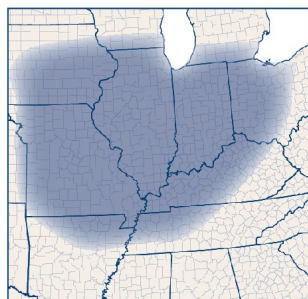
BRAND



110 DAY CORN BRAND
RELATIVE MATURITY

2650 HEAT UNITS
TO BLACKLAYER

FLOWERING RM
115



- An elite hybrid that can dominate on average to higher yielding ground
- Performs both north and south of the traditional 110 day zone
- Sturdy late season stalks
- Well-rounded disease package
- Impressive ear size across a wide range of planting populations

Silage MAX

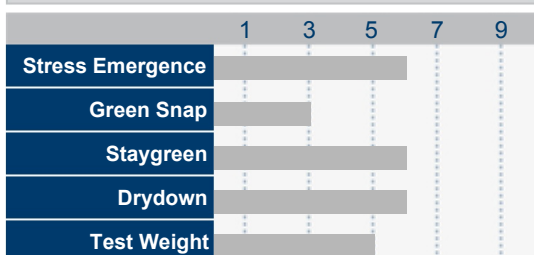
PLANT CHARACTERISTICS

Leaf Angle	Plant Height for Maturity	Ear Height for Maturity	Kernel Rows	Cob Color	Husk Cover
Semi-Erect	5	6	16-18	RED	5

Planting Population

For detailed population recommendations for your field, contact your Hoegemeyer sales representative or agronomist.

AGRONOMIC RATINGS



DISEASE TOLERANCE

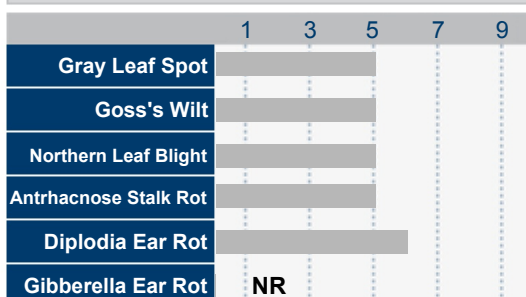


Chart Ratings

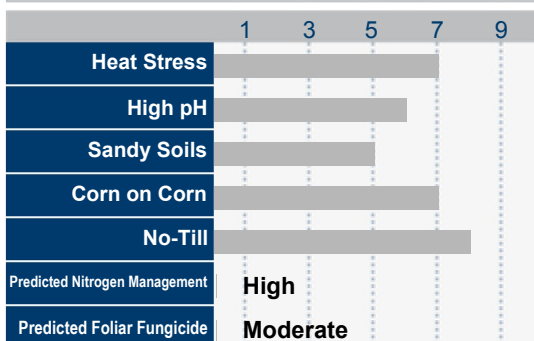
All ratings on a 1-9 scale with 9 being the best.

Plant Height, 9 is tallest

Ear Height, 9 is highest

NR = No Rating

MANAGEMENT CHARACTERISTICS



IRM Refuge Requirement - In the Bag

NOTES:



HOEGEMEYER.
THE RIGHT SEED.

AM - Optimum® AcreMax® Insect Protection system with YGCB, HX1, LL, RR2. Contains a single-bag integrated refuge solution for above-ground insects. In EPA-designated cotton growing counties, a 20% separate corn borer refuge must be planted with Optimum AcreMax products.

AMX - Optimum® AcreMax® Xtra Insect Protection system with YGCB, HXX, LL, RR2. Contains a single-bag integrated refuge solution for above- and below-ground insects. In EPA-designated cotton growing counties, a 20% separate corn borer refuge must be planted with Optimum AcreMax Xtra products.

RW,HX1,LL,RR2 (Optimum® TRIssect®) - Contains the Herculex I gene for above-ground pests and the Agrisure® RW trait for resistance to corn rootworm.

AMXT (Optimum® AcreMax® XTreme) - Contains a single-bag integrated refuge solution for above- and below-ground insects. The major component contains the Agrisure® RW trait, the YieldGard® Corn Borer gene, and the Herculex® XTRA genes. In EPA-designated cotton growing counties, a 20% separate corn borer refuge must be planted with Optimum AcreMax XTreme products.

AVBL,YGCB,HX1,LL,RR2 (Optimum® Leptra®) - Contains the Agrisure Viptera® trait, the YieldGard Corn Borer gene, the Herculex® I gene, the LibertyLink® gene, and the Roundup Ready® Corn 2 trait.

Q (Qrome®) - Contains a single-bag integrated refuge solution for above- and below-ground insects. The major component contains the Agrisure® RW trait, the YieldGard® Corn Borer gene, and the Herculex® XTRA genes. In EPA-designated cotton growing counties, a 20% separate corn borer refuge must be planted with Qrome products. Qrome® products are approved for cultivation in the U.S. and Canada. They have also received approval in a number of importing countries, most recently China. For additional information about the status of regulatory authorizations, visit <http://www.biotradestatus.com/>

LL - Contains the LibertyLink® gene for resistance to Liberty® herbicide.

Liberty®, LibertyLink® and the Water Droplet Design are trademarks of Bayer.

® Roundup Ready, YieldGard and the YieldGard Corn Borer design are registered trademarks used under license from Monsanto Company.

® Agrisure and Agrisure Viptera are trademarks of, and used under license from, a Syngenta Group Company. Agrisure® technology incorporated into these seeds is commercialized under a license from Syngenta Crop Protection AG.

Herculex® Insect Protection technology by Dow AgroSciences and Pioneer Hi-Bred.

Components of LumiGEN™ technologies for soybeans are applied at a Corteva Agriscience™, Agriculture Division of DowDuPont production facility, or by an independent sales representative of Corteva Agriscience or its affiliates. Not all sales representatives offer treatment services, and costs and other charges may vary. See your sales professional for details. Seed applied technologies exclusive to Corteva Agriscience and its affiliates.

TM ,®, SM Trademarks and service marks of Dow AgroSciences, DuPont or Pioneer, and their affiliated companies or their respective owners. © 2019, Hoegemeyer Hybrids.

